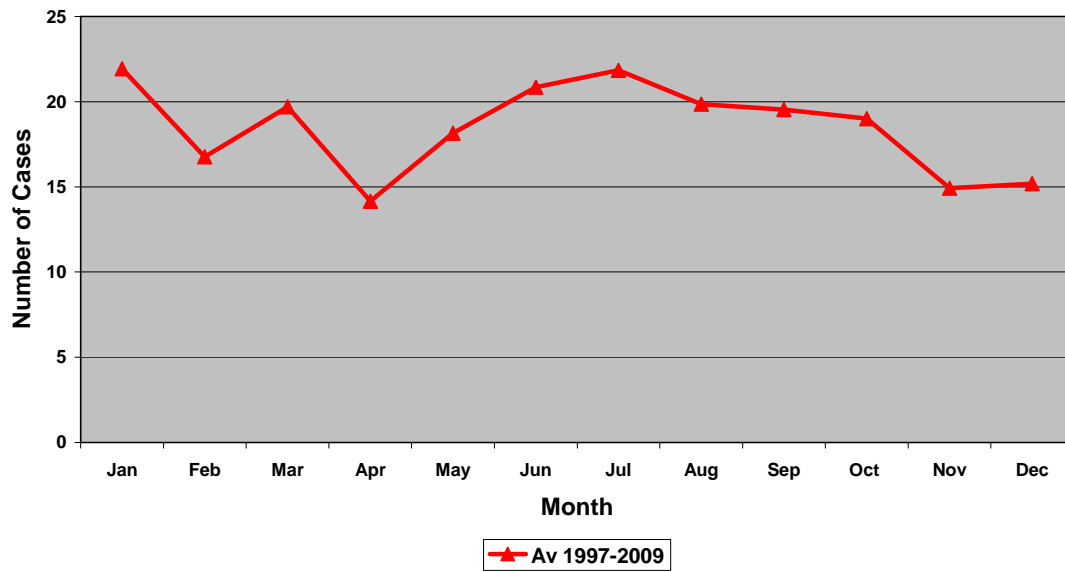
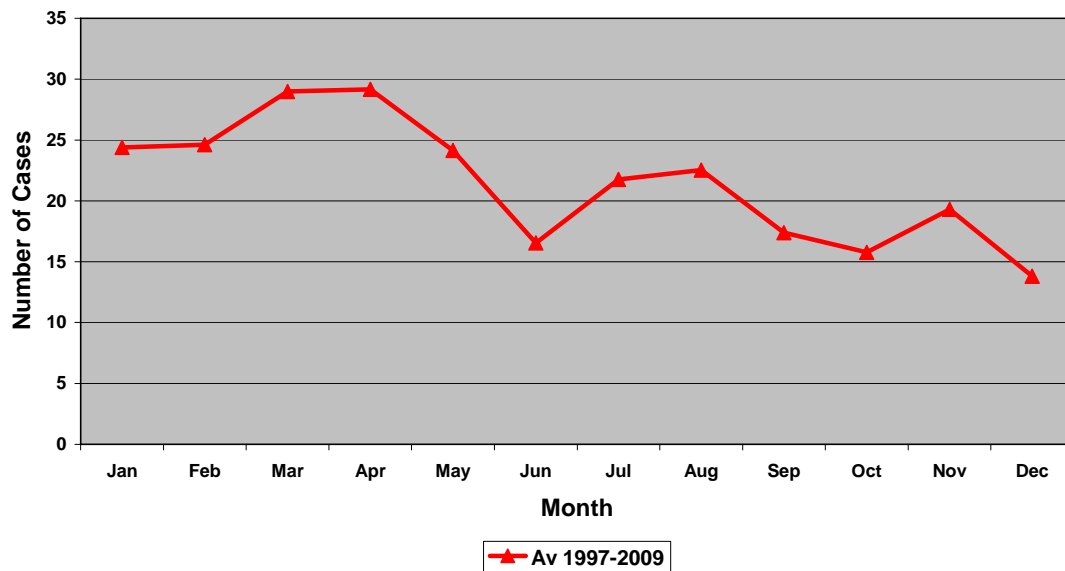


# NADIS Cattle Graphs – Monthly Average 1997 -2009

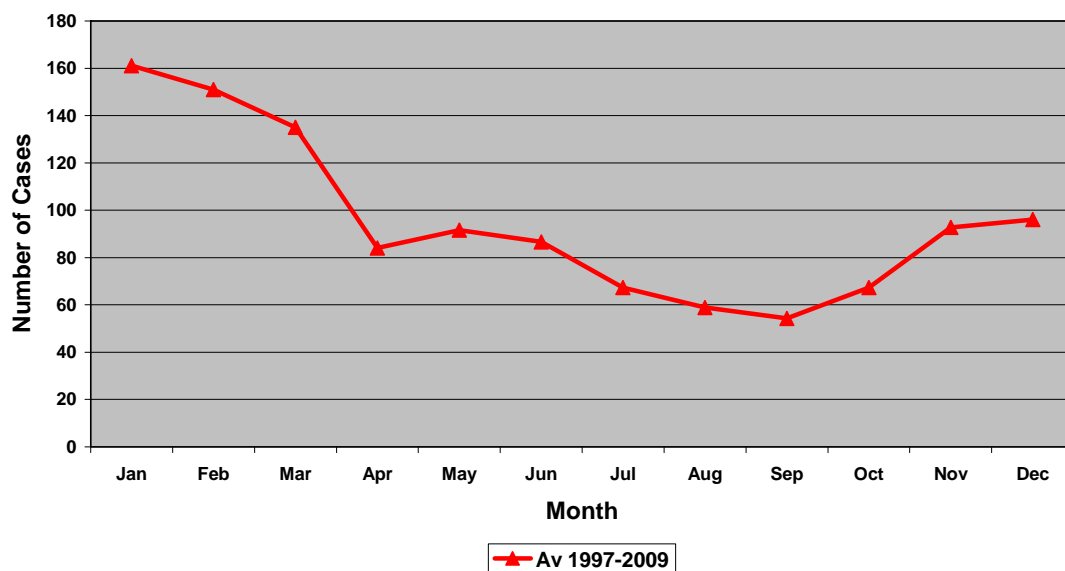
## Abortions - All Cattle



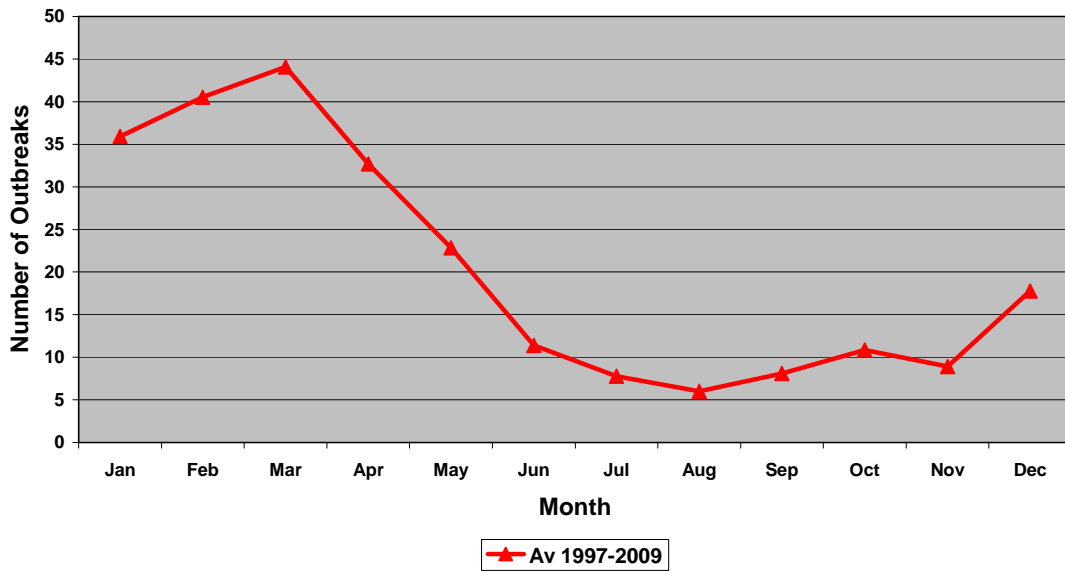
## Acetonaemia - Dairy Cows



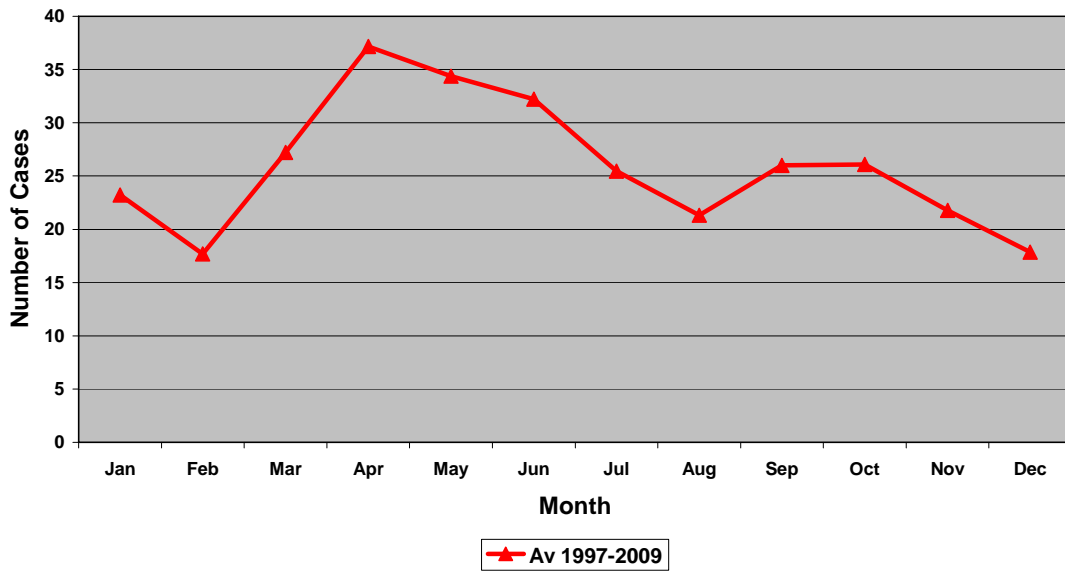
## Anoestrus - All Cows



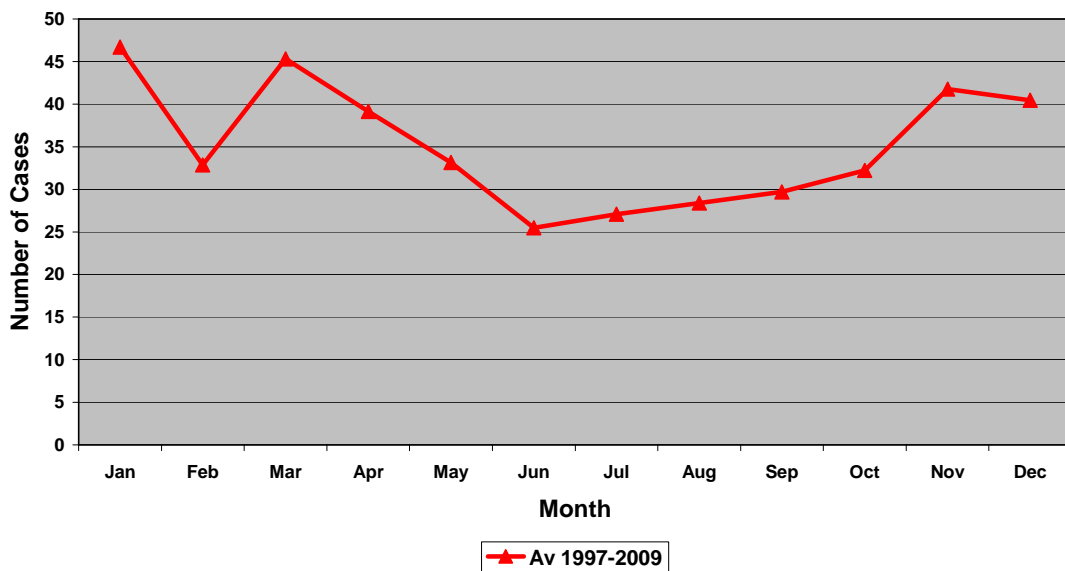
### Bovine Iritis - All Cattle



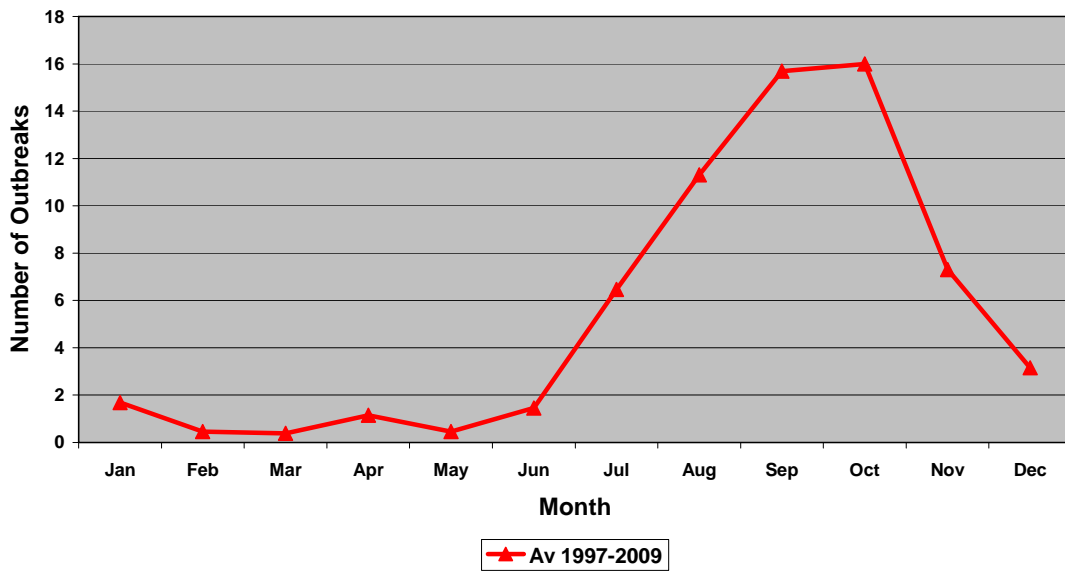
### Caesareans - All Cattle



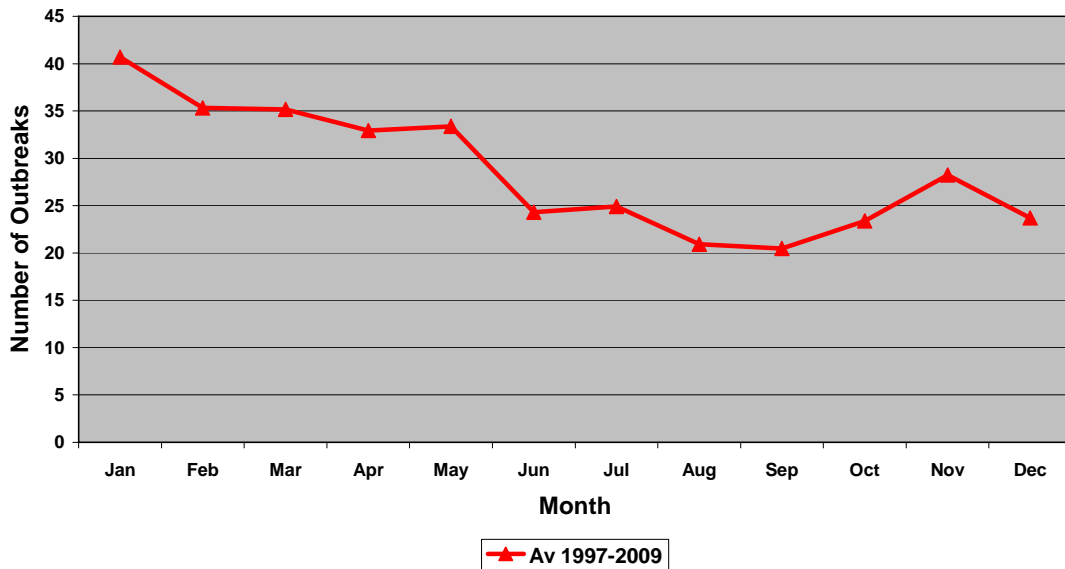
### Environmental & Toxic Mastitis - All Cattle



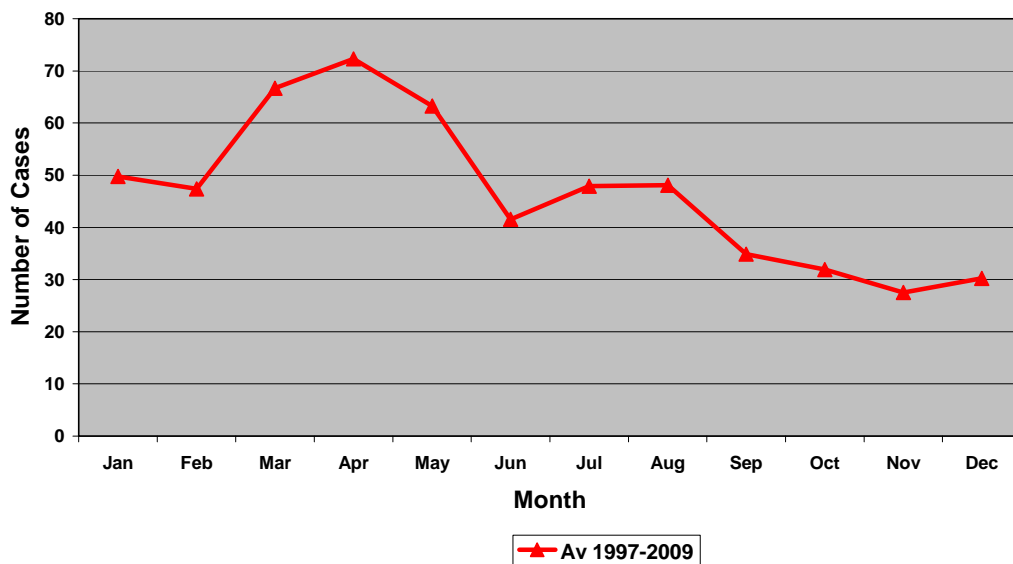
### Dictyocaulus - All Cattle



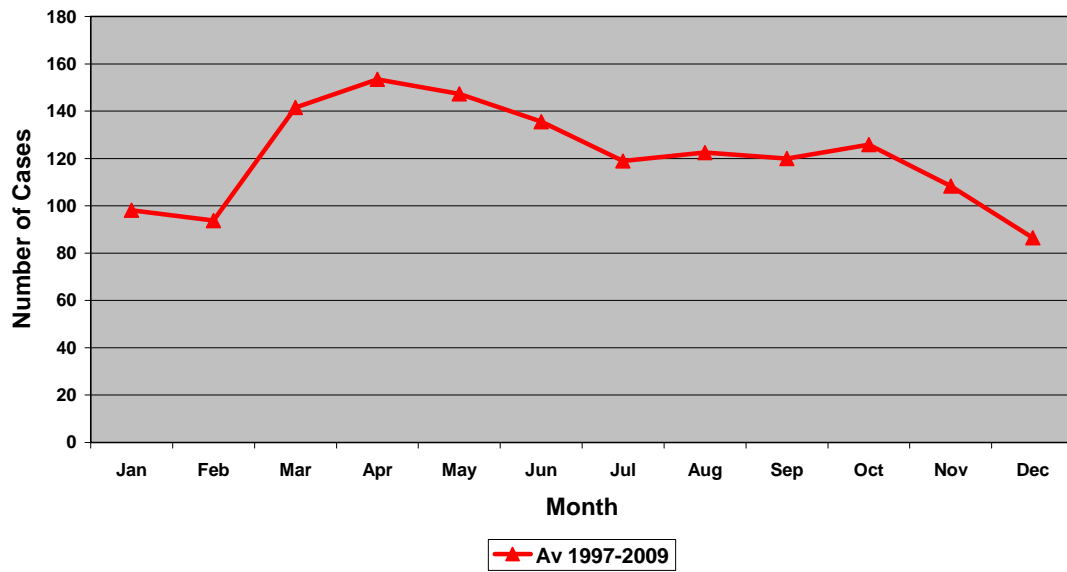
### Digital Dermatitis - All Cattle



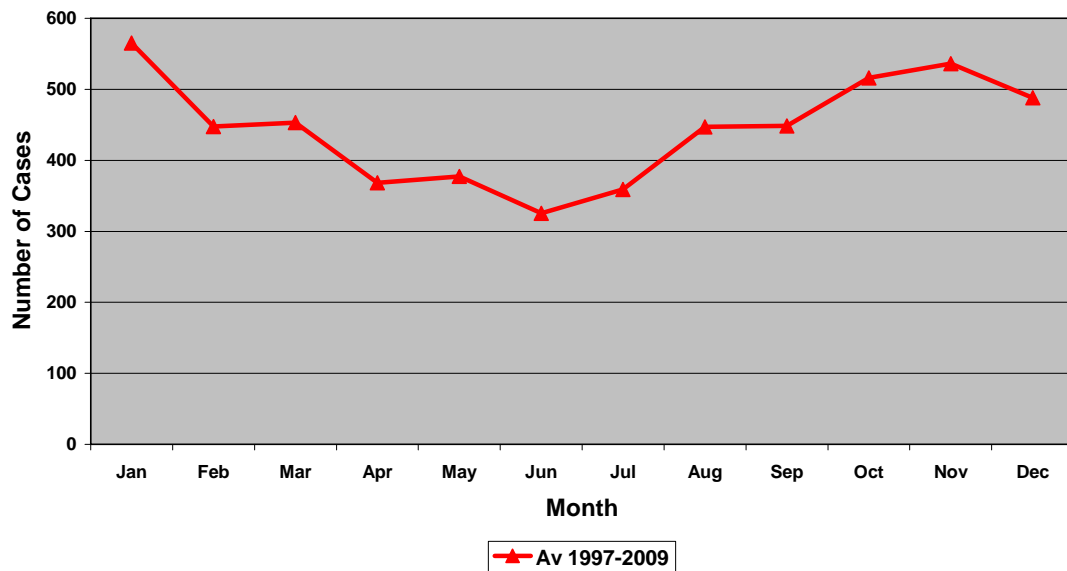
### Displaced Abomasum - Dairy Cattle



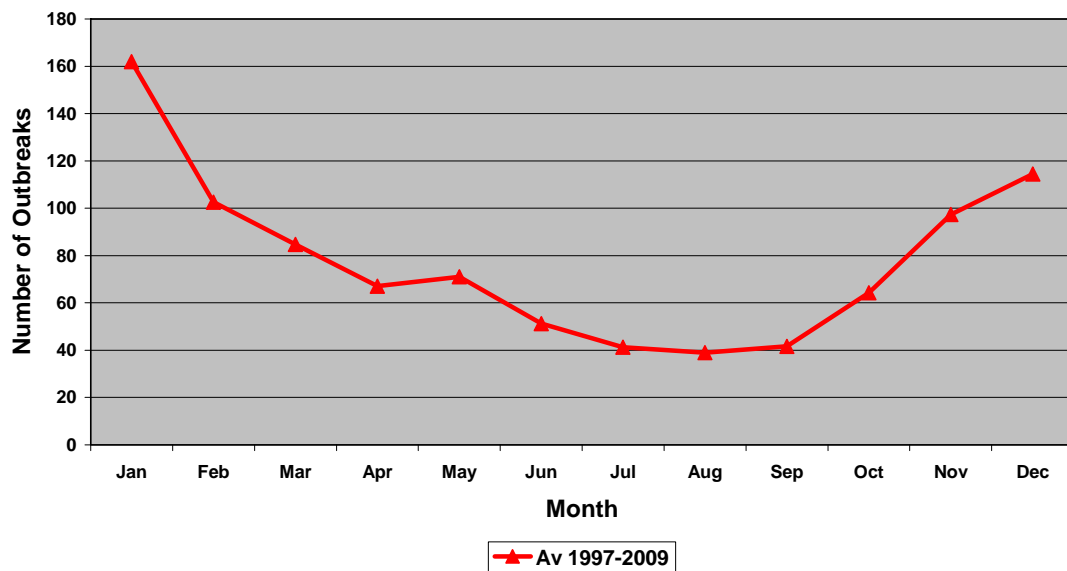
### Dystocia - All Cattle



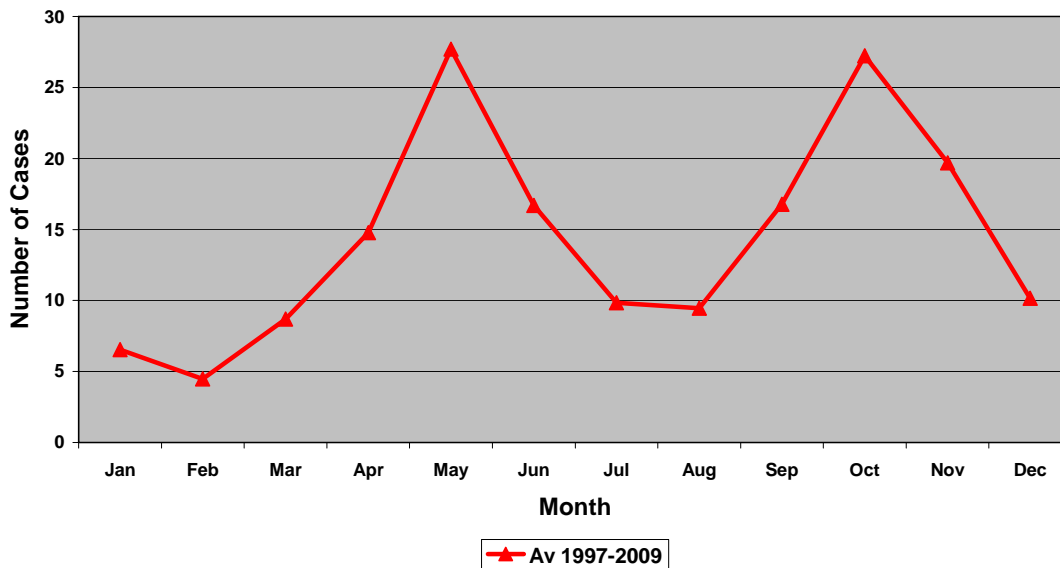
### Endometritis & Metritis - All Cattle



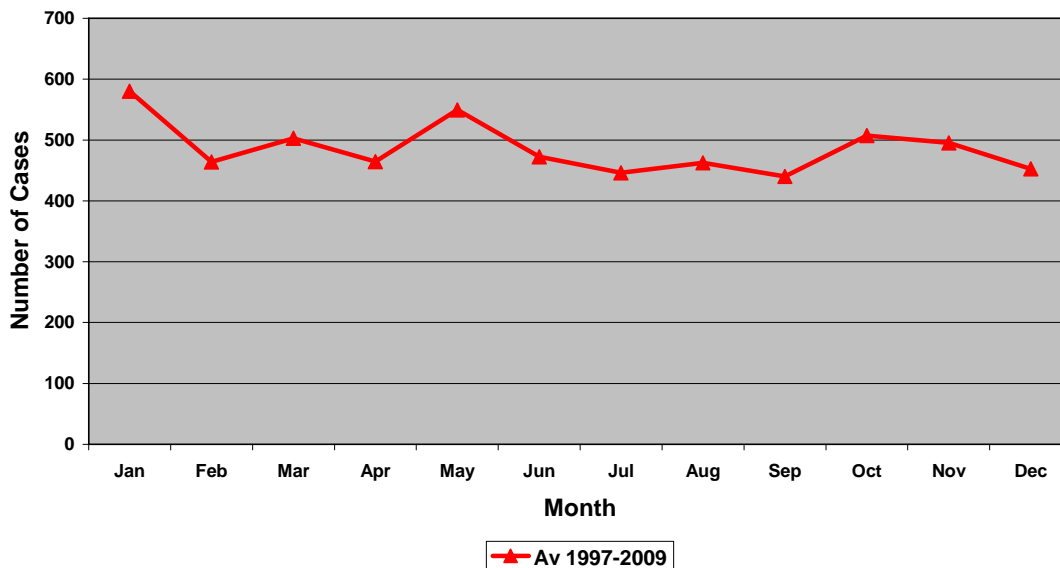
### Enzootic Pneumonia - Youngstock & Calves



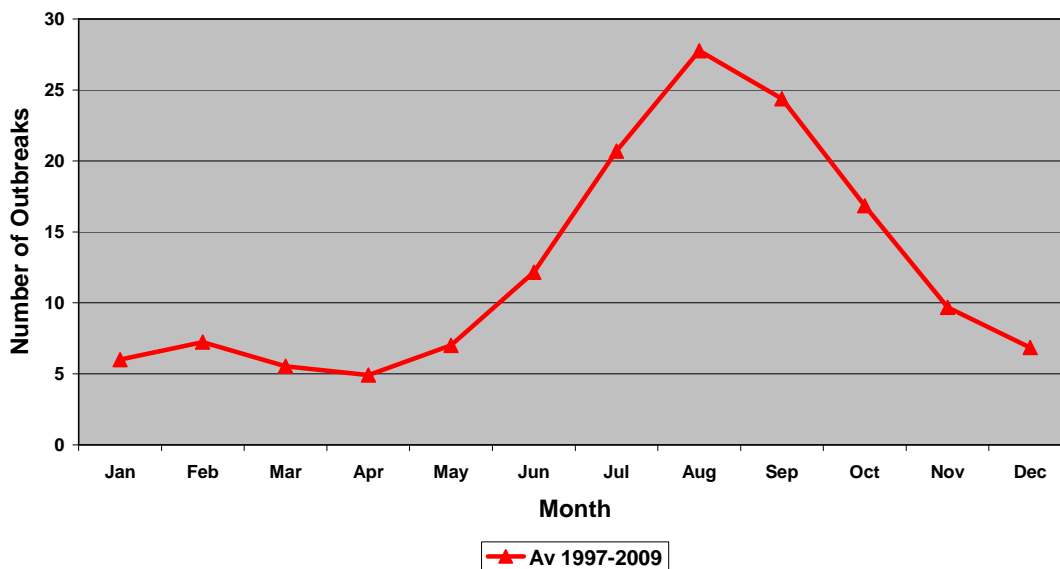
### Hypomagnesaemia - All Cattle



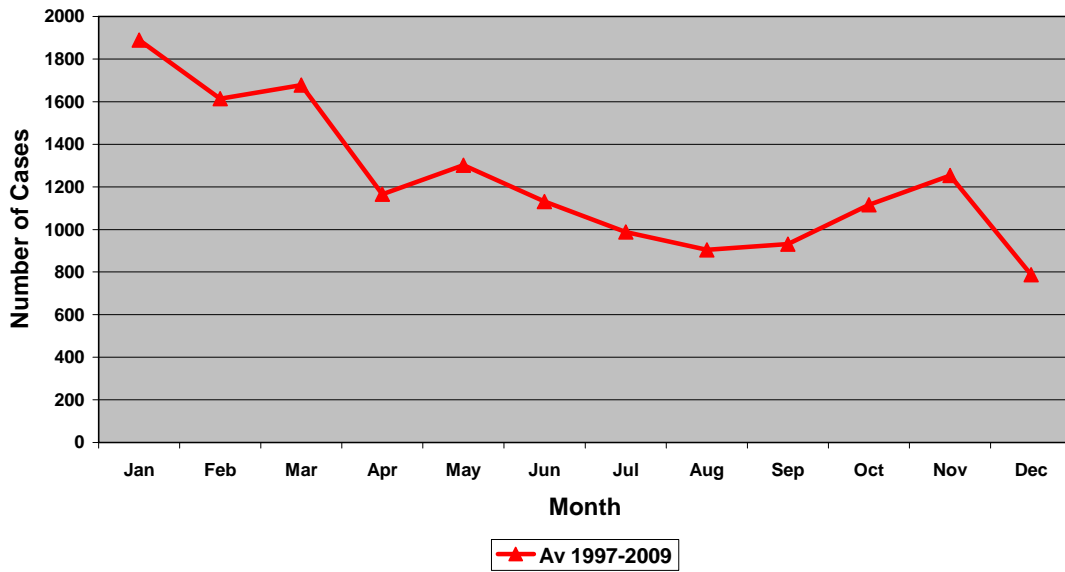
### Cattle Lameness - All Cattle



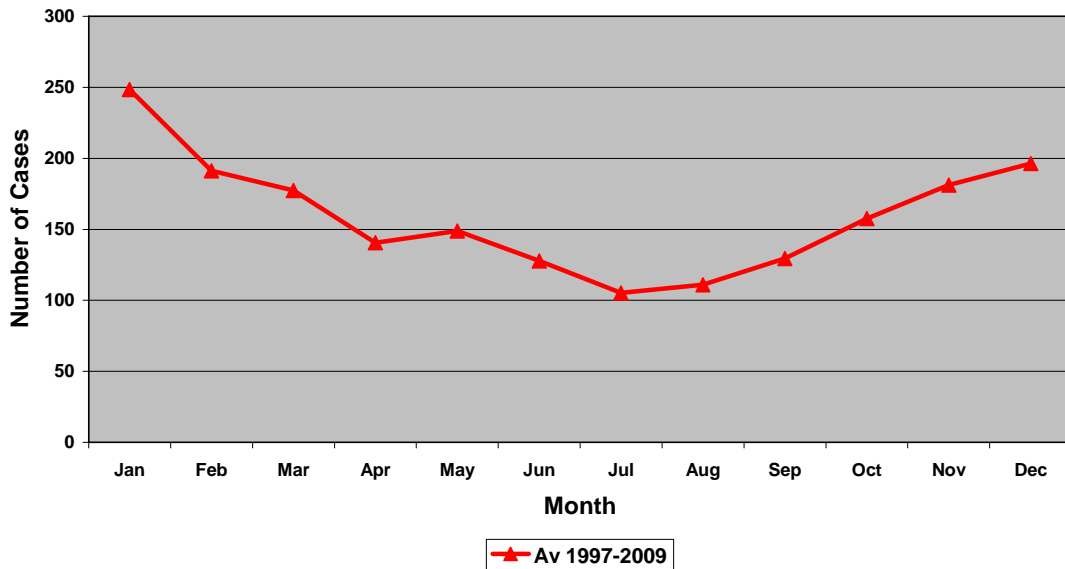
### New Forest Eye & Keratoconjunctivitis - All Cattle



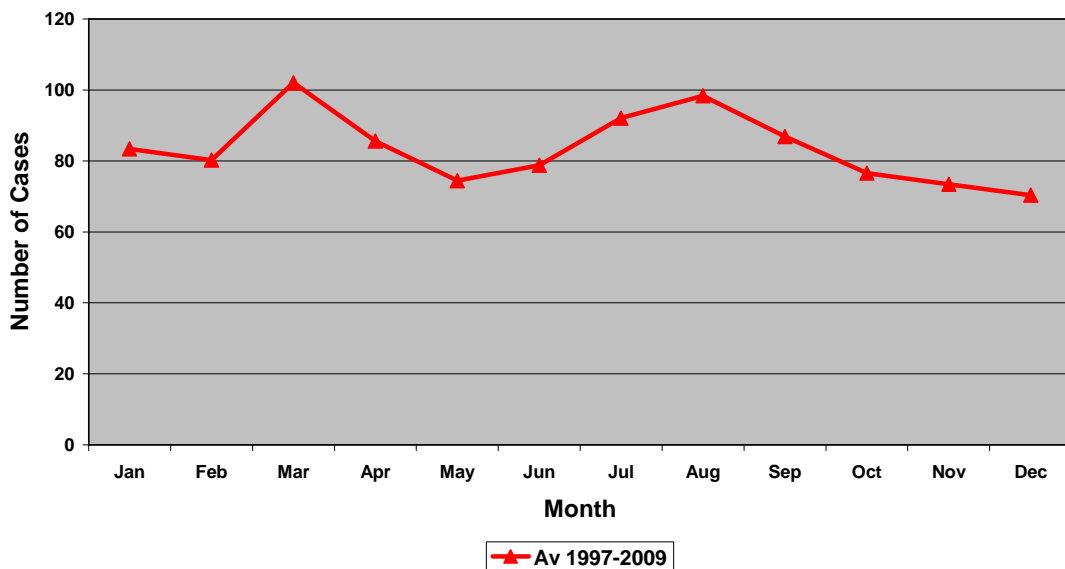
### Non Detected Oestrus - Dairy Cattle



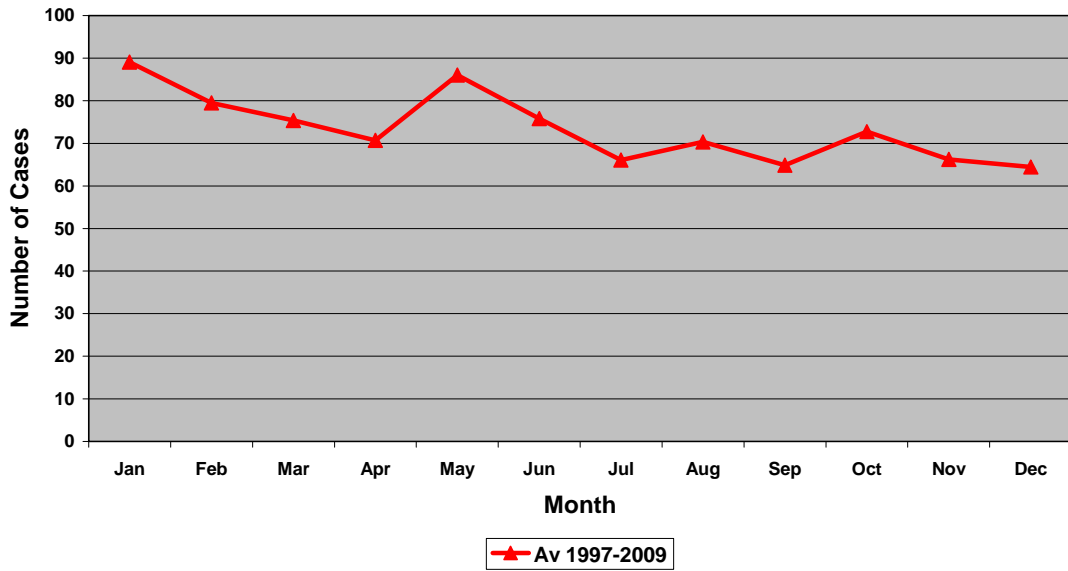
### Ovarian Cysts - All Cattle



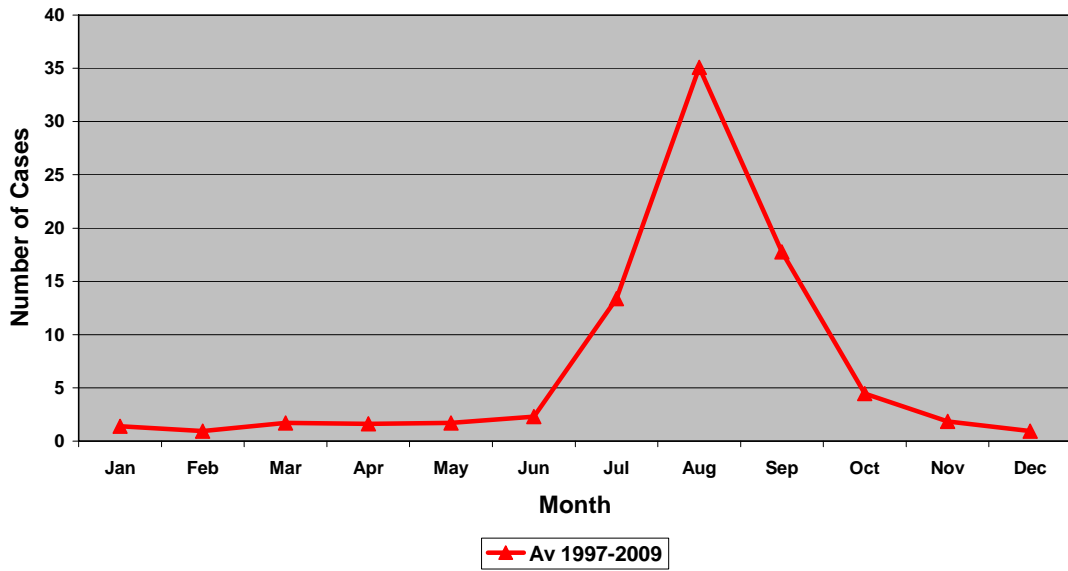
### Retained Placentas - All Cattle



### Solar Ulcers - All Cattle



### Summer Mastitis - All Cattle



### Uterine Torsion - All Cattle

