

# NADIS Animal Health Skills

## PIG DISEASES RESOURCE AND SEASONAL UPDATE ON PIG DISEASES

NADIS CPD IS ACCREDITED BY



AND QUALIFIES FOR CPD



SETTING VETERINARY STANDARDS



### PIG DISEASES RESOURCE

Save this resource on your desktop for future reference and share with interested colleagues and Pig Farmers. Click here to view the full A-Z list of resources



#### Seasonal Update on Pig Diseases

This quarterly update reviews emerging threats to the pig industry from data analysed by the APHA pig Expert Group as well as highlighting common conditions to watch out for and reviewing the importance of disease control and prevention.....



#### Ileitis and Proliferative Enteropathies in pigs

Serological (ELISA) studies on finishing pigs in the UK have shown that Lawsonia infection in pig herds.....



#### African Swine Fever

African Swine Fever is widely regarded as one of the most serious and damaging diseases affecting pigs worldwide....



#### Notifiable Diseases

Within the pig field, notifiable diseases are those infectious diseases, generally not present within the national population.....



#### Erysipelas in Pigs

Erysipelas is a long recognised bacterial disease of pigs and represents one of the most common clinical problems.....



#### Swine Influenza

Influenza in all mammalian species is caused by specific viruses that have the ability both to jump species and recombine to produce new strain.....



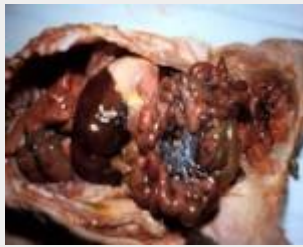
#### Greasy Pig Disease

Greasy Pig Disease is a bacterial infection of the skin of the pig, which is known by a variety of other names - Greasy Skin, Exudative Epidermitis, Marmite Disease.....



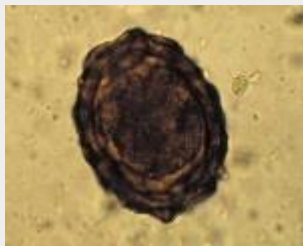
#### Swine Dysentery

Swine Dysentery has long been recognised as a major disease of pigs throughout the world and can be seen in all types of pig keeping operations.....



#### Piglet Scour

Diarrhoea (scour) is one of the most common ailments affecting the young piglet before weaning....



#### Worms

Parasites are a hazard for all pigs but those kept in more extensive conditions and in permanently occupied areas are more likely to build-up significant worm....



#### Biosecurity

Biosecurity refers to those measures that can be taken within an animal keeping environment to reduce or prevent the spread of infectious diseases....



#### Avoid Swill feeding

BVA and the Pig Veterinary Society (PVS) are reminding pig keepers to avoid swill feeding following....



#### African Swine Fever

The risk of African Swine Fever (ASF) being introduced into the UK pig herd has been raised from very low to low....



#### African Swine Fever

Information about and the control of the disease in Eastern Europe....



#### Pig Diseases

GB Emerging Threats Quarterly Report

IMPROVING PIG HEALTH



'PREVENTION IS BETTER THAN CURE'  
Plan for health with your vet – get a veterinary health plan

NADIS  
Animal Health Skills