

# NADIS Animal Health Skills

## SHEEP MEDICINE RESOURCE

NADIS CPD IS ACCREDITED BY



AND QUALIFIES FOR CPD



SETTING VETERINARY STANDARDS



## SHEEP MEDICINE RESOURCE

Save this resource on your desktop for future reference and share with interested colleagues and farmers. Click here to view the full A-Z list of resources.



### Eye disease in Sheep

This bulletin highlights diagnosis and treatment of various eye diseases in sheep.....



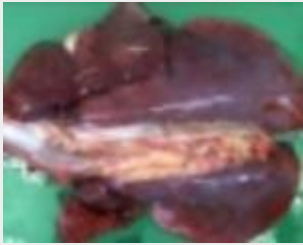
### Tooth problems in sheep

Correct dentition is of critical importance to the maintenance of body condition/weight gain in adult sheep....



### Non-parasitic skin conditions in sheep

Orf is one of the non-parasitic skin conditions affecting sheep....



### Respiratory disease in adult and yearling sheep

There are several causes of respiratory disease in adult sheep, the most common of which is Pasturellosis....



### Nervous diseases in Sheep

Clinical presentations, diagnosis, treatment and control of some of the nervous diseases in sheep....



### Foot trimming in sheep

In well managed flocks the prevalence of lameness can be as low as 2 per cent.....



### Sheep Medicines

Animal health and welfare are essential for efficient lamb production and disease control is a vital component.....



### Pain Management in Livestock

Pain in farm animals is typically assessed by changes in general body functions.....



### Biosecurity on Sheep farms

A good biosecurity regimen should always be in place to improve your farm efficiency and safeguard animal and human health.....

IMPROVING SHEEP HEALTH



'PREVENTION IS BETTER THAN CURE'

Plan for health with your vet – get a veterinary health plan

NADIS

Animal Health Skills