

NADIS CPD IS ACCREDITED BY



AND QUALIFIES FOR CPD

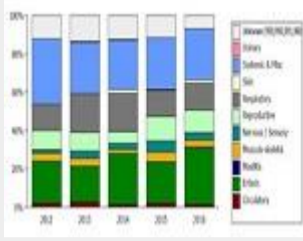


SETTING VETERINARY STANDARDS



### PIG DISEASES RESOURCE

Save this resource on your desktop for future reference and share with interested colleagues and Pig Farmers



#### Seasonal Update on Pig Diseases

This quarterly update reviews emerging threats to the pig industry from data analysed by the APHA pig Expert Group as well as highlighting common conditions to watch out for and reviewing the importance disease control and prevention.....



#### Erysipelas in Pigs

Erysipelas is a long recognised bacterial disease of pigs and represents one of the most common clinical problems.....



#### Glassers Disease

Acute septicaemia, 'blood poisoning', associated with infection with *Haemophilus parasuis* is typically seen in weaners of 8-10 weeks old.....



#### Porcine Epidemic Diarrhoea and Transmissible Gastroenteritis

The two viral enteric diseases of PED and TGE have historically been major causes of loss in pigs....



#### Salt Poisoning/Water Deprivation

Dehydration is a common sequel to many disease problems and management circumstances. The pig appears to be particularly vulnerable....



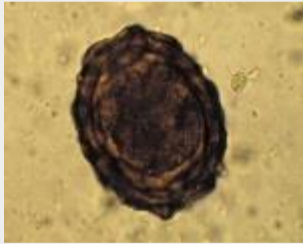
#### Streptococcal Meningitis

Meningitis is a relatively common disease of young pigs whereby infection leads to inflammation of the.....



#### Post Weaning Respiratory Disease

Fading with coughing and sneezing and poor appetite are the major presenting signs.....



#### Worms

Parasites are a hazard for all pigs but those kept in more extensive conditions and in permanently occupied areas are more likely to build-up significant worm....

### RELATED HEALTH INFORMATION ANIMAL HEALTH PROGRAMME DECEMBER-JANUARY



Every Tuesday NADIS will be emailing you with a topical animal health resource that reflects the seasonal disease challenge livestock face.



#### Biosecurity

Biosecurity refers to those measures that can be taken within an animal keeping environment to reduce or prevent the spread of infectious diseases....



IMPROVING PIG HEALTH



WATCH OUT FOR THE PARASITE FORECAST AND DISEASE ALERT ON JANUARY 3RD

'PREVENTION IS BETTER THAN CURE'

Plan for health with your vet – get a veterinary health plan

NADIS

Animal Health Skills

---

This email was sent to [janet.woodhart@nadis.org.uk](mailto:janet.woodhart@nadis.org.uk)

[why did I get this?](#) [unsubscribe from this list](#) [update subscription preferences](#)

NADIS · Eastwood · Boulston · Haverfordwest, Pembrokeshire SA62 4AQ · United Kingdom